

Why Do Users Join Hate Groups?

James Fu (University of Louisville), Keith Burghardt (USC ISI)

•Problem: Hate groups are an increasing problem online and offline

- Anti-Defamation League reports antisemitic incidents at an all-time high
- Study by START reveals that social media played a part the radicalization in nearly 90% of extremists in dataset
- Global Terrorism Database by START shows that terrorist attacks in the US are on the rise

•RQ1: Do offline events affect online groups?

•RQ2: Can we predict someone joining a hate group based on their activity?

Methods

Offline Event Impact –

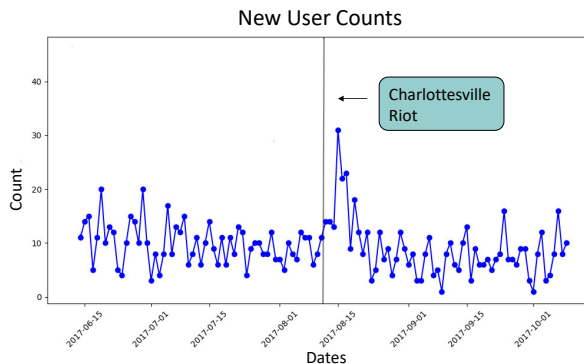
- Analyzed r/WhiteRights subreddit and Charlottesville Riot
- Observed New User Count 60 days before and after offline event

Predicting Hate –

- Collected 100k total unique users to generate dataset
- Dataset training on a modified AVAXTAR model

Evaluation

•Did more users join a hate group after the Charlottesville Riot?



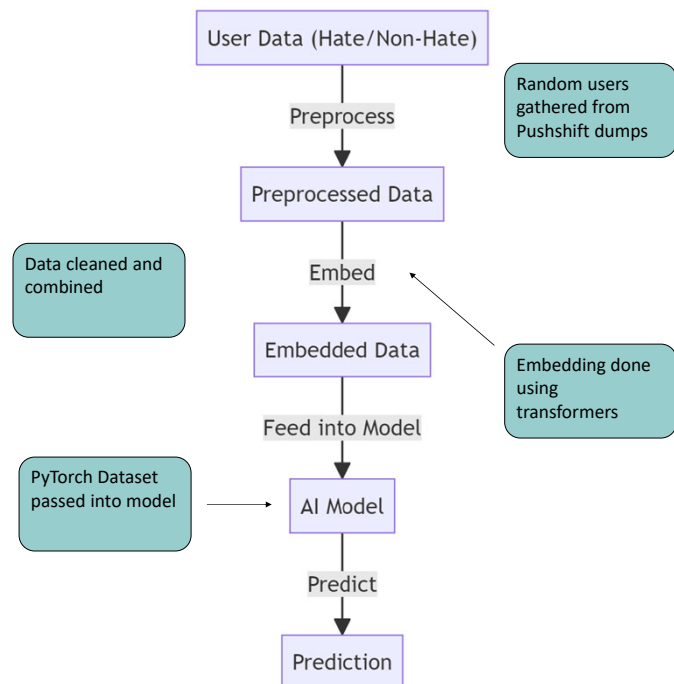
- Yes – the number doubled!

•Can we predict hate from user activity?

- Yes – created a working model
- Trained on 30k Users each

Accuracy	ROC_AUC	F1
80%	0.801	0.755

Model Structure



- Control users: Did not join hate subreddit
- Experimental users: Joined hate subreddit
- Predictive model trained on users

Future Work and Impact

- Next Steps: Analyze emotional differences between users
- Impact: Find people at risk for early intervention



If interested contact James Fu jjfu0001@louisville.edu
Work performed under REU Site Program
Supported by NSF grant #1659886